

Study of the quality of drinking water by the ART method "IMEDIS-TEST"
 Tarasova D.A., Tarasov A.V., Spiridonov G.N.
 (LLC "ENERGY-INFORMATION TECHNOLOGIES", Moscow, Russia)

In modern society, the level of the ecological state of health of the population is an integral part of the general indicator of health and well-being of the population.

One of the important factors affecting health and life expectancy is the quality of drinking water consumed. Therefore, providing the child and adult population with a sufficient amount of good-quality drinking water is an important state task. In accordance with the Federal Law "On the Sanitary and Epidemiological Welfare of the Population", the state sanitary and epidemiological supervision and production control should be exercised over the quality of drinking water. The good quality of drinking water is understood as the presence of favorable organoleptic properties, harmlessness of the chemical composition and content of radionuclides, microbiological and epidemic safety and physiological usefulness. The conclusion about the quality of drinking water is made on the basis of a comparison of the results of laboratory tests of water with the established standards. However, the quality of drinking water is also affected by its energy-informational state.

It is reliably known that water is capable of recording information on itself and transferring it in time and space. This makes the energy-informational quality of water different. The energy-informational state of water changes, and when it passes through deep deposits of radioactive rocks, it takes over the information of geopathogenic zones and faults, and is saturated with electromagnetic force fields with a centralized processing and supplying it to the water supply networks of settlements.

Thanks to the use of the ART method and the equipment of the Center - apparatus "IMEDIS" "MINI-EXPERT-DT" with software, we were able to to measure energy-informational quality of drinking tap water. The initial burdens of the volunteer-test subject were removed by the individual device we developed to protect a person from harmful geopathogenic and technopathogenic radiation. The subject then drank 100 milliliters of cold drinking tap water. The measurement results are presented in table. one.

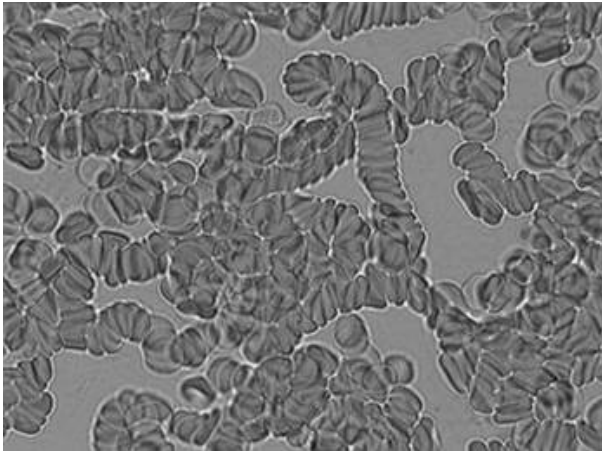
Table 1
 Distribution of the revealed loads in the examined person

LOAD TYPE	INITIAL VALUES	With device protection	After use drinking tap water, after 10 minutes
Yang force fields (positive geopathogenic fields with right rotation) Yin force fields (negative geopathogenic fields with left rotation)	one	-	0-1
Geopathogenic Hartmann grid	3	-	3
Geopathogenic Curry grid	2-3	-	2
Double geopathic zones X-ray	2	-	3
Gamma radiation	2	-	3
Electromagnetic radiation ("electrosmog")	4	-	3-4

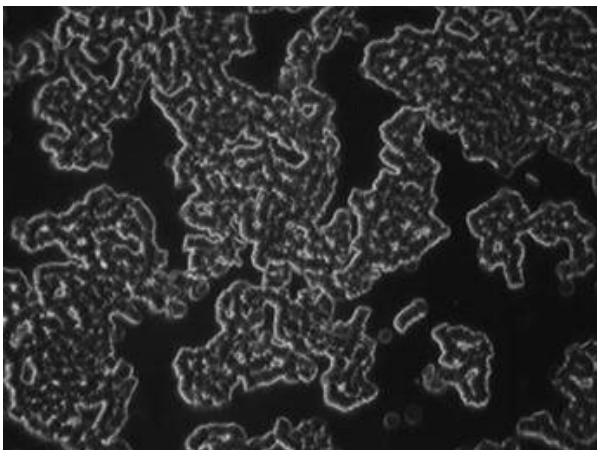
In order to do this

the study is more visual, in parallel with

research by the ART method on the equipment of the Center "IMEDIS" - apparatus "MINI-EXPERTDT" with software, the same volunteer-test was conducted another study - functional hemoscanning of a living drop of blood in light and dark fields. Hemoscanning was performed using a digital biological microscope MOTIC DMBA 300.



Rice. one. Initial hemoscanning data of a live blood drop in a bright field.
Magnification 1000x



Rice. 2. Initial data of hemoscanning of a living blood drop in a dark field.
Magnification 400x

It can be seen that the red blood cells are glued together in the so-called "coin columns" (Geldrolle - German). This condition is not normal. Normally, between like-charged erythrocytes and vascular walls, there is an electrostatic repulsion and therefore erythrocytes can freely move through the blood vessels and perform their oxygen transport function. To maintain an optimal state of homeostasis, erythrocytes must have a stable membrane negative charge [1], the change in which can be considered an integral indicator of pathological changes in the body. It is known that persistent shifts in this indicator by only 10–15% change the rheology of the blood, the elasticity of erythrocytes and the intensity of microcirculation decrease, and "coin columns" and sludges are formed. Hence, the morphofunctional properties of the blood change, it becomes more viscous, the garlands of erythrocytes stick together and can no longer freely circulate through the bloodstream, penetrate into the smallest diameter microvessels and enrich tissues with oxygen. This is how tissue hypoxia develops and cells switch from aerobic (in the presence of oxygen) to anaerobic (without oxygen) enzymatic oxidation pathway, i.e. glycolysis. In terms of energy, glycolysis is significantly inferior to aerobic oxidation. This leads to slugging and "acidification" of the body. Nevertheless, the PH-blood remains within the physiological norm of 7.37–7.45; but may tend to bias towards 7.37. Such a complex

changes will necessarily lead to the development of pathologies and diseases. Against this background, a person develops diseases of the cardiovascular system, disorders of cerebral circulation, which, in turn, leads to the development of heart attacks and strokes. The development of this state of the body can be facilitated by a person's stay in unfavorable conditions for him.

Based on the analysis of experience in the field of drinking water supply quality in such countries as: Japan, USA, Western Europe, our company has been dealing with the problem of correcting the energy-informational properties of drinking water and liquid food products for many years. The ultimate goal of these efforts is to contribute to the provision of the population with good-quality drinking water and the maintenance of the ecological health of the population. For these purposes, we use the stickers-correctors for drinking water and liquid food, developed by our company. The necessary energy-information programs are installed on the stickers-correctors using laser technologies. The action of the sticker-corrector is illustrated in table. 2.

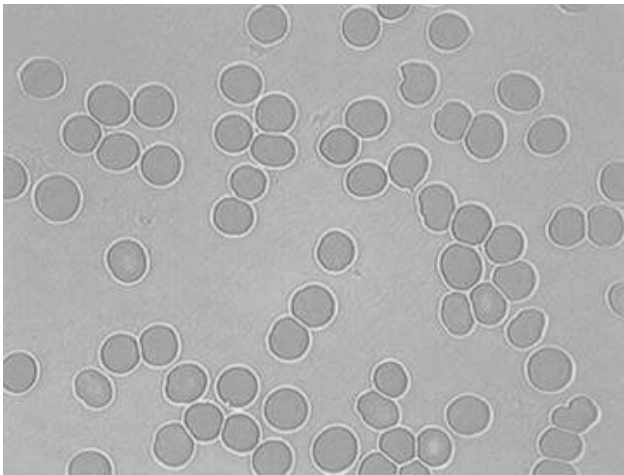
table 2

Distribution of the revealed loads in the examined person

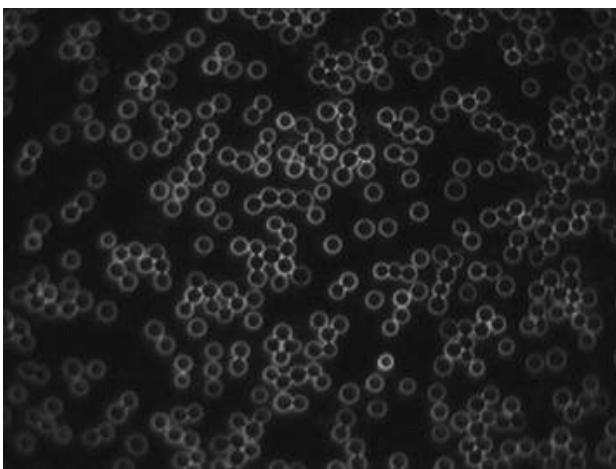
LOAD TYPE	After consumption drinking tap water, in 10 minutes.	10 minutes after drinking tap water, processed sticker proofreader, after 10 min.
Yang force fields (positive geopathogenic fields with right rotation)	0-1	-
Yin force fields (negative geopathogenic fields with left rotation)	2	-
Geopathogenic Hartman grid	3	-
Geopathogenic Curry grid	2	-
Double geopathic zones X-ray	3	-
Gamma radiation	3	-
	3-4	-
Electromagnetic radiation (electrosmog)	3-4	-

The "-" sign indicates that after 10 minutes no burdens were found in the body.

After measurements on the device "MINI-EXPERT-DT", a repeated hemoscanning of a living drop of blood was carried out.



Rice. 3. Repeated hemoscanning of a living blood drop in a bright field 30 minutes after drinking water treated with a corrector sticker. Magnification 1000x



Rice. 4. Repeated hemoscanning of a living blood drop in a dark field 30 minutes after drinking water treated with a corrector sticker. Magnification 400x

Using the equipment of the Center "IMEDIS" - the apparatus "MINI-EXPERT-DT", we conducted research on drinking tap water in many European countries and in different districts of Moscow and the Moscow region. In addition, with the help of this equipment, we have conducted extensive research on the various commercially available beverages and liquid food products.

We can say with confidence that ecologically clean water is, first of all, its freshness, pleasant taste and compliance of its quality with all safety standards. And if there is an opportunity to improve at least one of these indicators, then everyone needs to do it - and scientists and doctors, and employees of the relevant services.

Apparatus Center "IMEDIS" ^{Conclusion} "MINI-EXPERT-DT" allows conduct comparative analysis of energy-informational qualities of drinking water and determine the degree of its burdening with geopathogenic and technopathogenic loads.

The corrector sticker transforms the energy-informational properties of water. Therefore, it easily removes all existing environmental burdens from the body. On the example of a blood test after drinking water treated with a sticker-proofreader, the restoration of the optimal physiological parameters of the blood is clearly visible.

These conclusions, first of all, should be of interest to doctors and specialists practicing energy-informational methods of diagnostics and treatment, and homeopaths, because geopathogenic, radiation, electromagnetic loads are external interference fields, against the background of which (i.e., without their elimination) it is impossible to carry out accurate diagnosis [2], and, consequently, treatment.

Taking this opportunity, we would like to express our gratitude to the staff of the IMEDIS Center for the unique equipment that allows us to carry out such research in the shortest possible time and draw conclusions that correspond to reality.

Literature

1. Kozinets G.I., Popova O.V., Budnik M.I. and other Electric charge of blood cells. Practical medicine. - M., 2007.
2. Gotovsky Yu.V. Electro-acupuncture diagnostics and therapy using vegetative resonance test "IMEDIS-TEST". - M. : IMEDIS, 2000.

Tarasova D.A., Tarasov A.V., Spiridonov G.N. Investigation of drinking water quality by the ART method "IMEDISTEST" // XVII

M. : " IMEDIS ", 2011, vol. 2 - pp. 29-37