

Application of the ART method "IMEDIS-TEST"
to conduct an examination of the eco-safety of a residential building
YES. Tarasova, A.V. Tarasov, G.N. Spiridonov
(LLC "ENERGY-INFORMATION TECHNOLOGIES", Moscow, Russia)

Today, comfortable housing does not always meet all the requirements and criteria for environmental safety. This refers to the impact on the human body of geopathogenic and technopathogenic parameters in a residential building, especially in places of long stay - in places of work, sleep and rest, as well as long stay of children - play and educational places.

This study was preceded by a short study conducted by us in the Department of Pediatric Leukemia of the Research Institute of Oncology. Blokhin (Moscow). Using the ART method and the equipment of the Center "IMEDIS" - the apparatus "MINI-EXPERT-DT" with software, we examined 15 sick children aged from two to fourteen years to identify unfavorable environmental loads. The survey confirmed that 50% of children have a radioactive load higher than the second degree and 50% of children have high-level geopathogenic and electromagnetic loads.

It has been statistically proven that the so-called "cancer sites" are characterized by the detection of the following most dangerous geopathogenic zones with left-sided circular polarization [1]:

- central reactive zones of underground water flows;
- Diagonal Curry Grid;
- double zones of action of lattice grids;
- induced intersections.

According to K. Bachler [2], on the basis of a study of cancer patients, the following dependence of the occurrence of oncological diseases was revealed (the number of cases per 1000 people):

- underground water flow - 0;
- Curry diagonal grid line - 0;
- the intersection of two underground water streams and a node of the Curry grid - 7;
- intersection of two groundwater streams and the Curry grid line - 10;
- intersection of two underground water streams - 12;
- node of the diagonal Curry grid - 13;
- the intersection of the underground water flow and the curry grid line - 39;
- intersection of the Curry diagonal grid node and groundwater flow - 69.

A sad confirmation of the above was the presence in a 10-year-old child with a relapse of lymphoblastic leukemia of a combined induced geopathogenic effect of the fourth degree in a sleeping place at the place of residence. It would seem that a sufficiently effectively treated acute leukemia and a favorable prognosis of doctors did not foretell such a development of the disease for a ten-year-old boy - a relapse in one year. However, it cannot be ruled out that it was precisely the presence of a geopathogenic zone in his home that provoked a second wave of the disease.

Another indicative case from the same department of children's leukemia - two girlfriends living on different floors of the house and having identical sleeping places one above the other, ended up in the department of leukemia, both of them were tested for high degrees of geopathogenic burden.

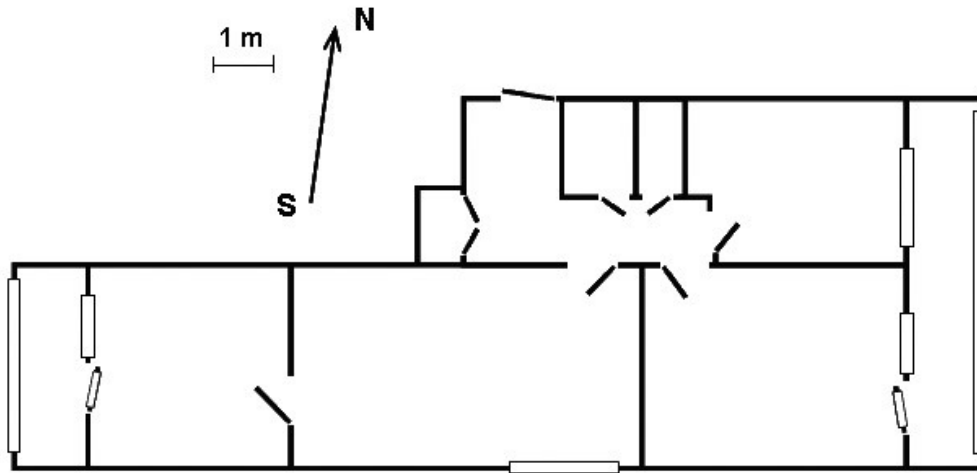
Such cases only confirm statistically reliable studies by other authors and the involvement of unfavorable environmental factors, along with other risk factors, in the development of oncopathology and other serious diseases, such as heart attack, stroke, etc. A number of other important circumstances also affect the development of diseases [3]:

1. The nature and intensity of the geopathogenic zone.
2. Duration of geopathogenic impact.
3. Combination of geopathogenic effects.
4. The human constitution.
5. Hereditary predisposition.
6. The presence of acute or chronic stress.
7. Presence of immunosuppression.
8. Morphofunctional state of organs and systems of the body.
9. The presence of concomitant diseases.
10. Lifestyle and bad habits.
11. State of the environment.

The authors of the article [4] made the following conclusion: geopathogenic, radioactive and electromagnetic

loads are important, etiologically significant factors, the role of which is extremely high in the formation of pathological processes in the body.

The purpose of this study was (a) to conduct an environmental examination of the premises using the ART method and the equipment of the IMEDIS Center - the MINI-EXPERT-DT apparatus and (b) to ensure the safety of this premises by integral methods of protection against negative geopathogenic and technopathogenic influences.



Rice. one.

Schematic floor plan

When examining the premises, the following instruments and equipment were used:

1. Magnetic compass.
2. Stalchinsky bioradiometer (for determining geopathogenic meshes).
3. Wigelbeier radioestesimeter (for determining underground water flows) Medical equipment of the Center "IMEDIS" - apparatus "MINI-EXPERT-DT" (autonomous version).
4. All work was carried out in four stages.

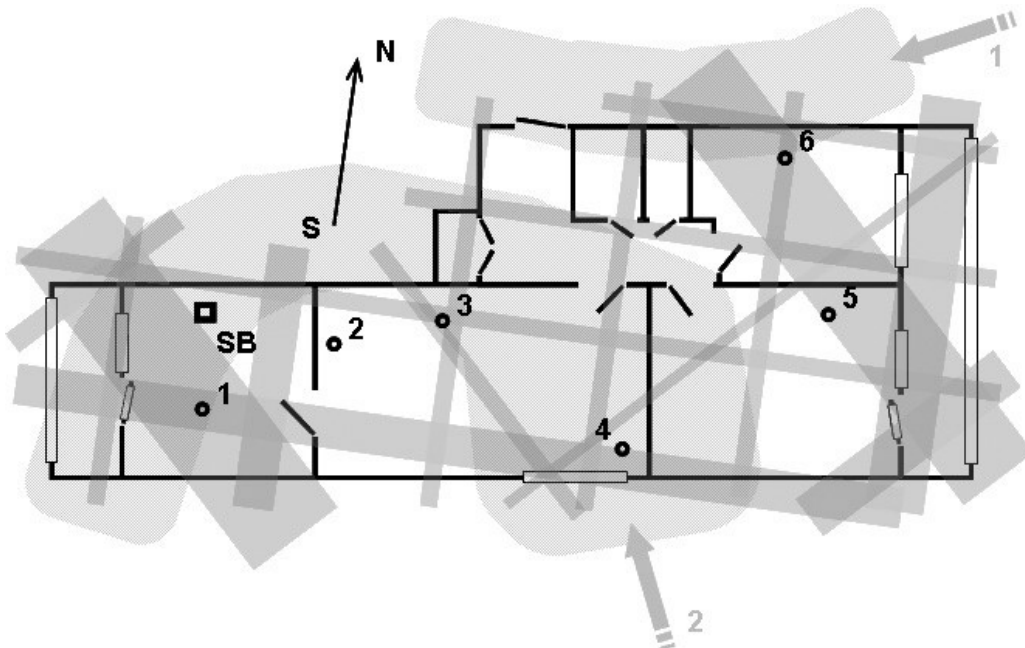
STAGE I

The floor plan is oriented in a north-south direction using a magnetic compass.

II STAGE

Found geopathogenic grids of Hartmann, Curry and the present underground water flows are applied to the floor plan.

To measure the magnitude of the available eco-loads, six control points were selected, which coincide with the places of sleep, work or study:



Rice. 2. Control six points: places of sleep, work and study The direction of groundwater flows is shown by arrows 1 and 2.

Stage III

At each control point, measurements were carried out by the ART method on the equipment of the Center "IMEDIS" - apparatus "MINI-EXPERT-DT". The results obtained are presented in table. one.

Table 1

Distribution of identified eco-loads by control points

LOAD TYPE	At the point # 1	At the point # 2	At the point No. 3	At the point No. 4	At the point No. 5	At the point # 6
Geopathogenic Hartman grid	3	2	2	3	2	3
Geopathogenic Curry grid Yang force fields	2	one	one	4	2	4
- positive geopathogenic fields with right rotation Yin force fields negative	one	2	2	2	3	2
geopathogenic fields - with left rotation Sign of the resulting Yang / Yin energy at the measurement point - "plus", "minus" or "zero"	one	3	2	3	2	4
	"0"	"_"	"0"	"_"	"_"	"_"
Double geopathogenic zones	2	2	2	4	2	4
X-rays Gamma radiation	2	2	3	4	2	3
	2	2	3-4	4	2	4
Electromagnetic radiation (electrosmog)	4	3	4	4	3	4

From table. 1 it can be seen that this room can be attributed to a moderate degree of heaviness. Dash "-" in table. 1 means complete absence of burden, "0" - traces of burden.

To protect against the influence of adverse factors was installed in the room an experimental model of a device for the integral protection of premises (in Fig. 2 it is designated SB), conventionally named "Schutzbox" (from it. "Schutzbox", protective box). The principle of operation of the device is based on the use of controlled energy-information technologies and several know-how. The dimensions of the Schutzbox are 15 x 15 x 2 cm.

Note. For these studies, the so-called passive shutzbox was used, i.e. without a power source, although for rooms of significant size and strong degrees of burdens, an active type of Shutzbox should be used, i.e. with a power supply.

IV STAGE

After about one hour, repeated measurements of the weights at the control points were taken. The results are presented in table. 2.

table 2

Distribution of identified eco-loads by control points

LOAD TYPE	IN point # 1	IN point # 2	IN point No. 3	IN point No. 4	IN point No. 5	IN point # 6
Geopathogenic Hartman grid	-	-	-	-	-	-
Geopathogenic Curry grid Yang force fields - positive geopathogenic fields with right rotation Yin force fields	-	-	-	-	-	-
negative geopathogenic fields - with left rotation Sign of the resulting Yang / Yin energy at the measurement point - "plus", "minus" or "zero"	-	-	-	-	-	-
Double geopathogenic zones X-rays Gamma radiation	-	-	-	-	-	-
Electromagnetic radiation (electrosmog)	-	-	-	-	-	-

Dashes "-" in tab. 2 means complete absence of geopathogenic and technopathogenic weights, which means complete energy-informational protection of the premises. Further measurements were taken once a week for six months to observe the persistence of the protective effect - the protective effect persisted.

Conclusion

Places of sleep, rest, work, study and other stationary objects for a long stay of a person are always exposed to the greatest negative impact of the environment in time, as a result of which there is an accumulation of negative energy potential in the human biofield with a tendency to distribute this potential to the entire body, followed by blocking of energy channels, meridians and chakras. With the preserved compensatory defense system of the body and a short-term stay in the weighed down zone, a gradual self-cleaning of the biofield occurs without external intervention. But with a long stay in weighted zones or during the day in other geopathogenic and technopathogenic zones, talking on a mobile phone, working for a long time at a computer, at work, etc. such self-cleaning does not have time to occur and the system is overloaded and then blocked, decompensation occurs, the result of which is the development of pathologies called geopathogenic "target organs", "target systems". Such diseases bear the imprint of the origin of the connection between the diseased organ, the system and the determining negative factor of influence. In such cases of persistent burden, permanently fixed by the medical equipment of the IMEDIS Center, external intervention is required in the form of integral protection of the room, or through the use of individual protective devices that ensure constant monitoring of radiation and protection from them at the level of the human biofield. "Target systems". Such diseases bear the imprint of the origin of the connection between the diseased organ, the system and the determining negative factor of influence. In such cases of persistent burden, permanently fixed by the medical equipment of the IMEDIS Center, external intervention is required in the form of integral protection of the room, or through the use of individual protective devices that ensure constant monitoring of radiation and protection from them at the level of the human biofield. "Target systems". Such diseases bear the imprint of the origin of the connection between the diseased organ, the system and the determining negative factor of influence. In such cases of persistent burden, permanently fixed by the medical equipment of the IMEDIS Center, external intervention is required in the form of integral protection of the room, or through the use of individual protective devices that ensure constant monitoring of radiation and protection from them at the level of the human biofield.

Literature

1. Litvinenko A.A. The energy of the pyramids. Magic rod and star pendulum. - M.: "LATARD", 1997.
2. Bachler K. Erfahrung einer Rutengängerin. Geobiologische Einflüsse auf den Menschen. 1984.
3. Gotovsky Yu.V., Kosareva LB, Kempe N. External noise fields and assessment of their influence on biological objects // Abstracts and reports. IV International Conference "Theoretical and Clinical Aspects of the Application of Bioresonance and Multiresonance Therapy". - M.: IMEDIS, 1998.
4. Avanesova E.G., Avanesova E.S., Gotovsky Yu.V., Kosareva LB Role of different types of loads in the onset of the disease in the aspect of psycho-neuro-somatic unity in the body // Abstracts and reports. X International Conference "Theoretical and Clinical Aspects of the Application of Bioresonance and Multiresonance Therapy". - M.: IMEDIS, 2004.

