

## Correspondence systems theory, principles of its formation

THOSE. Sokolova

(NUDOiM "Su Jok Academy", Moscow)

### Summary

This work is devoted to the theory of mini-acupuncture systems (MAS), systematization of various MAS based on the principles of organization of the Homo-system of the body (system of similarity and reflection), which plays an important role in the processes of self-regulation and integration of the body into a single whole.

General principles are considered the formation various mini-acupuncture systems and criteria for choosing the most effective systems for practical work.

Keywords: mini-acupuncture systems (MAC), systems correspondences, Homo-system of the body, similarity, zones (points) of correspondence.

To date, a wealth of practical experience has been accumulated in the use of various areas of body surfaces as mini-acupuncture systems (MAS). The allocation of a particular area of the body as MAS is carried out on the basis of the somatotopically organized representation of the body diagram and internal organs. When exposed to the representative point of the MAC, a distinct therapeutic effect should develop in the represented organ.

The mini-acupuncture systems of the auricle, scalp, nose, mouth, hands and feet are described. But to date, there are certain discrepancies in the location of the projection zones on the hands, feet, ears and other systems [1, 5, 6, 8, 15]. All this dictates the need for a systematic approach to the use of various mini-acupuncture systems and the creation of a unified theory of correspondence systems. Therefore, in this work, we tried to summarize the basic principles of the formation of mini-acupuncture systems.

Since ancient times, traditional medicine has had the knowledge that certain parts of our body reflect the state of the whole organism. Throughout the history of the development of world medicine, the problem of reflecting the internal environment of the body on its outer shell for the diagnosis and treatment of diseases has been solved (and is being solved at the present time) [8]. The ancient Chinese treatise "Nei Jing Ling Shu" for the first time speaks of the existence of a system of correspondence to the human body on the face. In the area of the forehead there is a correspondence to the head, the zone of correspondence to the heart is in the area of the bridge of the nose, the lungs are on the cheeks. In the area of the lips, the organs of the genitourinary system are projected. This system was used to diagnose various diseases on the face. In Ayurveda, ancient Indian medicine, there is a description of the projections of internal organs in the language, in this case, the projections of the internal organs are located on the tongue in the same order in which they are in the body. Language diagnostics is widely used in traditional

Chinese medicine and at the present time [7, 10, 12, 15].

It is believed that even in Ancient Egypt, the diagnosis of the iris of the eye was known. Several detailed maps of the iris have been compiled in recent years. For the first time, a systematic approach to the study of MAS was proposed by P. Nogier. He suggested that the shape of the auricle is similar to a human embryo and detailed the somatotopic distribution of acupuncture points on the auricle [1, 7, 8, 12, 15]. This allowed auricular acupuncture to stand out as a new independent direction in reflexotherapy and showed that similarity is a universal key to understanding the principles of organization of mini-acupuncture systems [3]. Although, it should be noted that the historical roots of treatment by influencing the areas of the auricle go back to antiquity (V-III centuries BC). The method was described in China, but Chinese experts were forced to admit that P. Nozhier "rediscovered auriculotherapy for China" [1, 8]. Recently S.V. Timoshevsky carried out a detailed comparative analysis of the Chinese and French auricular cartograms.

Currently, various projection maps are actively used, describing the representations of body parts and internal organs on the hands and feet. The earliest and original works by K. Hirata (1912), W. Fitzgerald (1917), which tried to explain the presence of projection zones on the feet from a position close to segmental innervation, deserve mention [5, 8, 9].

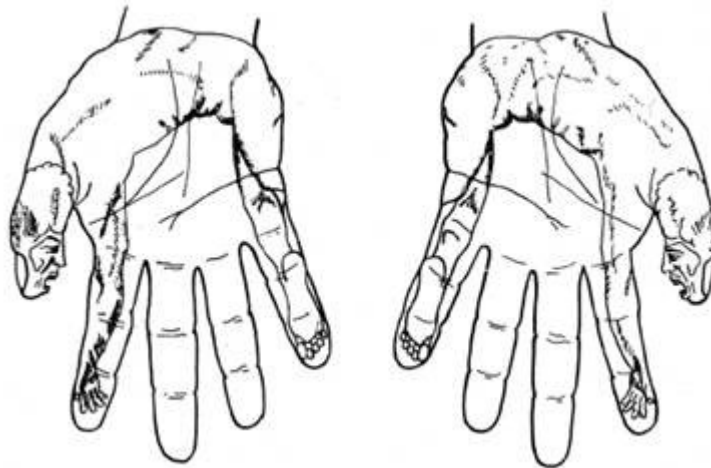
In the future, projection maps on the feet according to R. Dale (1976) became widespread; it is these maps that are actively used now in reflexology [5, 9].

Since ancient times, a group of points located on the dorsum and palmar surfaces of the hand has been used, known as the system of Chinese hand acupuncture points (Fig. 1) [7, 15].

Deserves attention method korean acupuncture on brushes, developed by Yoo Tae Woo (1975), where a connection is established between the acupuncture points of the meridians and certain projection zones of the internal organs and body parts on the hands. The projection of the head in this system is on the third finger [5, 13, 15]. F. Kandarov made a great contribution to the development of mini-acupuncture systems, who developed a whole mini-acupuncture complex, including reflex projections on the hand, foot, external auditory canal, tongue, orbit, scalp, sternum (Fig. 2) [5, 6].



Rice. 1. The system of Chinese acupuncture points on the hand.



Rice. 2. Survey somatotomy of a person on the palmar surface of the hand (according to F. Kandarov).

An original interpretation of the entire phenomenology of mini-acupuncture was offered by the Chinese scientist Zhang Yingqing in 1988. He generalized disparate assumptions about the possibility of a connection between the visceral and somatic divisions in the process of laying and forming them in the embryo and put forward a generalizing theory of this phenomenon from the standpoint of embryogenesis. This system is called the Bioembryoinformation system of the whole organism, the ECIWO system (Embryo Containing Information of the Whole Organism) and is located on the second metacarpal bone [8, 15]. But there is also a system of the fifth metacarpal bone, represented mainly by points of the meridian of the small intestine and points located next to the course of the meridian [15].

The system of correspondence to the spine on the foot is successfully used in clinical practice, in which the similarity between the spine and the foot is very clearly traced [15]. Is being carefully developed and actively

used by the MAC of the scalp. But even here there are certain contradictions in finding points on the lines of scalp acupuncture, and several systems are described in detail. First of all, this is the neurological system of the scalp, proposed by Chinese scientists in the 60s of the 20th century, in which the zones on the scalp are localized in accordance with the projection of the cortical analyzers of the brain (Penfield) on the integumentary tissues of the skull: motor, sensory, visual zones, etc. etc. Thus, 16 acupuncture lines have been described, which are used to treat the corresponding pathology [12, 13, 15].

The work of the Japanese specialist T. Yamamoto, who in 1985 developed his own treatment system called "new scalp acupuncture", deserves much attention [16]. This system is based on the somatotopic representation of the body in certain areas of the scalp. At the same time, T. Yamamoto proceeds from the principles of somatotopy in different levels of the nervous system, comparing such phenomena with holography, where information from the integument of the body and internal organs converges in each section. It is believed that "somatotopes" arise only in the process of pathology, and the impact on them gives a very rapid therapeutic effect, which is realized due to "nervous, humoral, chemical, physical and mental processes" [4, 12, 15, 16].

Then, according to the international acupuncture nomenclature, it was assumed that the microacupuncture system of the scalp consists of 14 lines connecting the points of the acupuncture canals located on the scalp [1]. Oral acupuncture continues to develop, exploring the connections of individual formations of the oral cavity with internal organs [5, 8, 15]. This issue is most fully presented in the monograph of the German doctor J. Gleditsch "Oral acupuncture". The nasal point system or nasopuncture is well developed. The MAS of nasal points includes points located exonasally on three lines of the dorsum and wings of the nose and points of the nasal passages (endonasal systems) [15]. Nasopuncture was further developed in the nasolabial acupuncture system proposed by A.T. Kachan [8].

Thus, we see what most famous MAC "Concentrated" on the cerebral skull, auricle, nose, oral cavity, as well as on the hands and feet. As a result of research by many authors, projection systems have been found on other parts of the body.

Specialists are interested in the projections of the body on the leg, presented by R. Siener [15]. A well-known diagnosis is based on the test zones of the anterior abdominal wall modified by T. Yamamoto, where 12 zones on the anterior abdominal wall correlate with the state of 12 meridians and with the points of new scalp acupuncture [15, 16].

Of practical interest is the scheme of paracervical points according to E. Adler H. Langer for the diagnosis of diseases in the head region [15]. Received theoretical and practical substantiation of sternopuncture according to F. Kandarov [5]. The work of A.V. Ushakov, in which it was proved that the sternum has a highly accurate reflex correspondence to the spine and is considered as a microsystem [14]. Thus, from antiquity to the present, a fairly large amount of data has accumulated on the presence of numerous projection reflexogenic zones reflecting the internal

---

the state of the body.

Studying various correspondence systems, the author of the Su Jok therapy method Park Jae Wu created his own original theory of correspondence systems, which called the Homo-system or the system of similarity and reflection [3, 10, 11]. Homo, translated from Greek, means similarity, unity, equality. The homo-system includes a large number of correspondence systems located throughout the body, and is designed so that each part of the body, which has a sign of functional or structural integrity, contains information about the state of the whole body and its individual parts. The unit of the Homo-system is the correspondence system, which is an energy-informational copy of the organism. In this case, the correspondence system reflects the anatomical and functional state of the body. The homo-system ensures the maintenance of energy-informational homeostasis

by the process of active life of the body, by interaction and interaction of similar structures [3, 11]. The homo-system is organized according to certain principles, the knowledge of which makes it possible to find the most active points for the treatment of various diseases on any part of the body.

The principles of the formation of the Homo-system of the body [eleven]

1. The correspondence system occupies the entire area of a unit structure body, to which it belongs, repeating its size and shape (Fig. 3).

2. In any system of correspondence, the proportions of the reflected body or organ (Fig. 4).

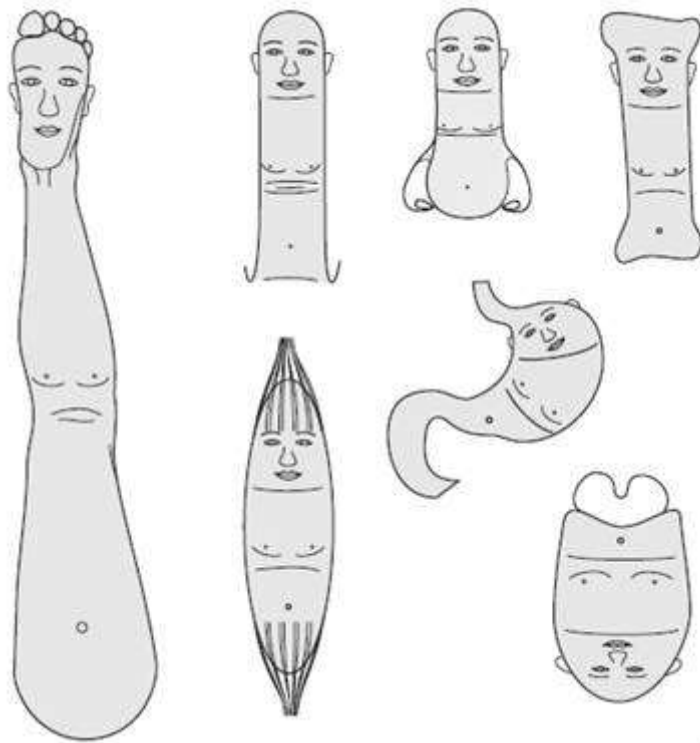
3. Any system is located symmetrically relative to the central lines of the part of the body onto which it is projected. Moreover, on the one hand from the central line corresponds to the right half of the reflected structure, and on the other side - to the left (Fig. 5).

4. The Yang side of the body (organ) is projected onto the Yang surface, and Yin is the side of the body (organ) is projected onto the Yin surface of the corresponding body structure (Fig. 6).

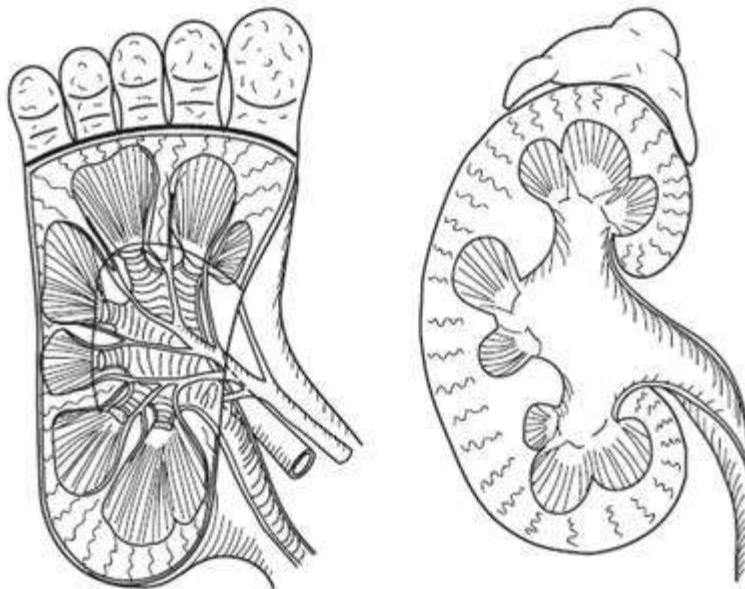
5. Information about any part of the body falls not only to the point of correspondence, but is also transmitted through the reflection axes to other points of the correspondence system. Thus, we can talk about the existence of two types of points in correspondence systems: treatment points of correspondence and reflected points.

6. Any part of the body, having its own system of correspondence, at the same time is part of a larger body structure on which the larger matching system resides. But at the same time, it consists of separate parts that have their own correspondence systems of a smaller size. Therefore, in Homo-system, there is a combination of mini-acupuncture systems of different levels. Currently, the International Acupuncture Nomenclature (IAN) includes only two systems - the auricular and the scalp. They entered the MAN under the name of not mini-, but micro-acupuncture systems. Therefore, the term microacupuncture system is not entirely accurate, since within each mini-acupuncture system, even smaller ones are distinguished, which should be considered as micro-acupuncture systems [1, 3]. For example, the mini-acupuncture system of the hand contains

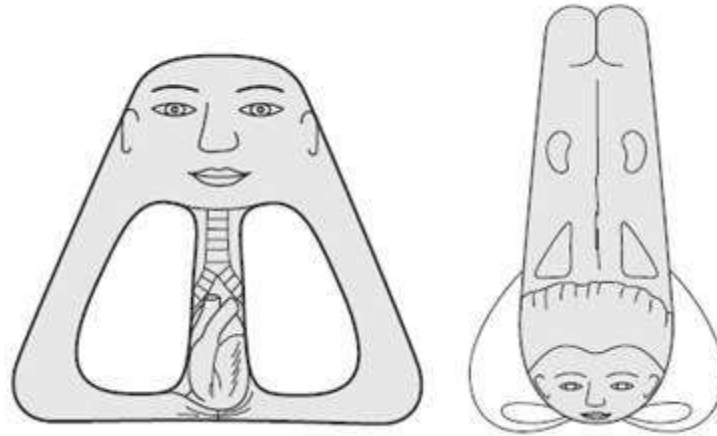
bioembryoinformation system ECIWO, represented by the second metacarpal bone, as well as the system of the fifth metacarpal bone. Therefore, it is necessary to highlight mini-, micro and macroacupuncture systems [3].



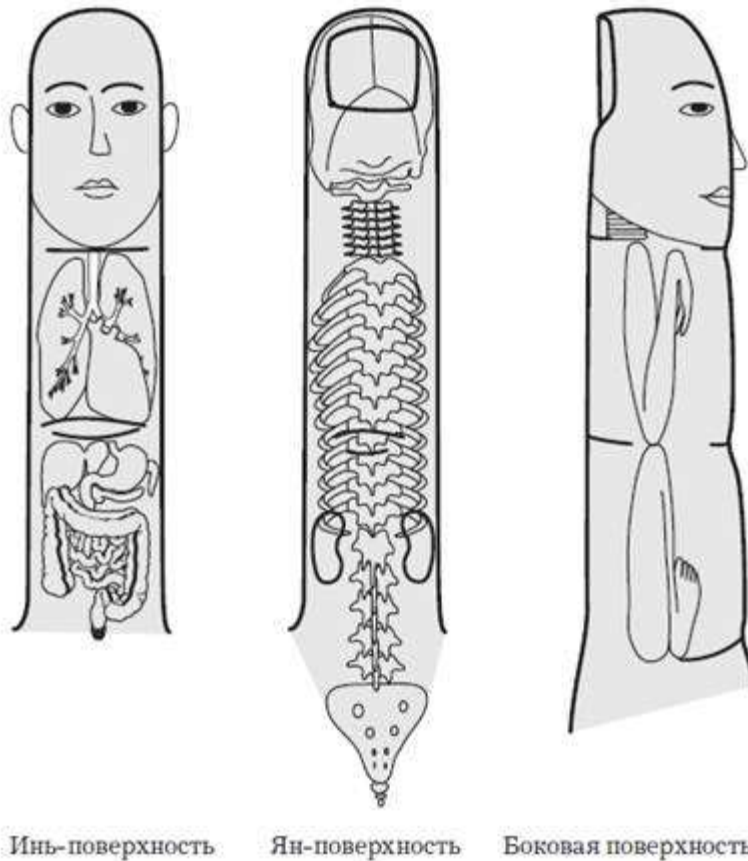
Rice. 3. Systems of correspondence to the body on the leg, finger, nose, bone, muscle, stomach and language.



Rice. 4. System of correspondence to the kidney on the foot.



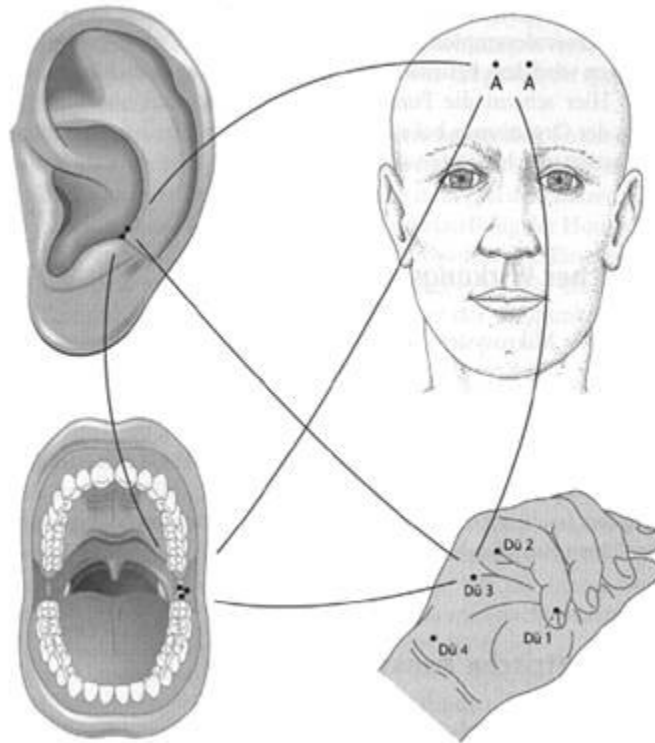
Rice. 5. System of conformity to the body on the nose.



Rice. 6. System of correspondence to the body on the fingers (the "insect" system).

7. Any part of the body is simultaneously projected into all integral structures organism, therefore in the Homo-system there is a huge number of energetically interconnected correspondence systems. All correspondence systems have the ability to simultaneously receive information about the disease, respond to it by increasing pain sensitivity at the appropriate points and provide

therapeutic effect when stimulated (Fig. 7) [1, 4]. Understanding the principles of organizing the hierarchical Homo-system made it possible to systematize the available empirical knowledge about the location of reflexogenic zones on the hands, feet and other areas of the body.



Rice. 7. The location of the points of correspondence of the cervical spine in various compliance systems.

Thus, a huge number of energetically interconnected correspondence systems are simultaneously present in the human body; in the end, any point of the body interacts with another point of the body, therefore, the holographic principle lies at the heart of the effectiveness of treatment through correspondence systems. Holography demonstrates the unique principle of the universe, according to which each particle can contain information about the whole and, therefore, can restore it [2, 4]. The hologram provides a new unique model that can help science understand the energetic structure of the Universe, as well as the multidimensional nature of man. At the same time, numerous functional systems and their "system quanta" are interconnected on the basis of the principles of hierarchy, multiparametric and sequential interaction [4].

The implementation of the holographic principle "each particle contains the whole" can be traced at the level of cells of living organisms. K. Pribram (1975) applied the holographic principle to explain the mechanisms of memory perception and the formation of images in the central nervous system and came to the conclusion that, in accordance with the principles of holography, any part of the brain contains information of integral perception. When various parts of the brain are damaged, other parts of the brain, interacting with the "field sphere", take over their function [4]. Scientific



discoveries in the field of cell biology have shown that every cell contains a copy of the paternal DNA structure, which stores enough information to recreate the entire human body. We are the same hologram, because each of our cells contains information about the whole body, which is convincingly proven by cloning experiments [2]. Therefore, all existing correspondence systems are an objective reality. The principles of functioning of the hierarchical Homo-system serve as an additional indication that the participation of the nervous system (reflex reactions) is not the only and far from decisive mechanism of the therapeutic effect of acupuncture, substantiating the possibility of correcting the state of the meridian system of the body through its correspondences located on the hand, foot, ear the shell and other areas of the body [4].

Each mini-acupuncture system has a certain therapeutic and diagnostic value, being of interest to specialists [5, 6, 8, 10]. But, in view of some practical features, the use of individual systems is difficult (oropuncture, endonazo-exonazopuncture) [14], therefore it is necessary to dwell on the issue of criteria for choosing the most effective correspondence systems [11].

The main criteria for choosing a compliance system are:

1. Degree of similarity. The more pronounced the similarity, the stronger the Homo connection, the higher susceptibility to treatment, since similarity implies interaction based on the phenomenon of resonance. The similarity can be expressed:

- in the similarity of shape and structure. For example, the body correspondence system on the hand, the system of correspondence to the kidney on the foot, the correspondence to the embryo on the auricle;

- in the similarity of function. For example, effective treatment of lung diseases through the nasal matching system.

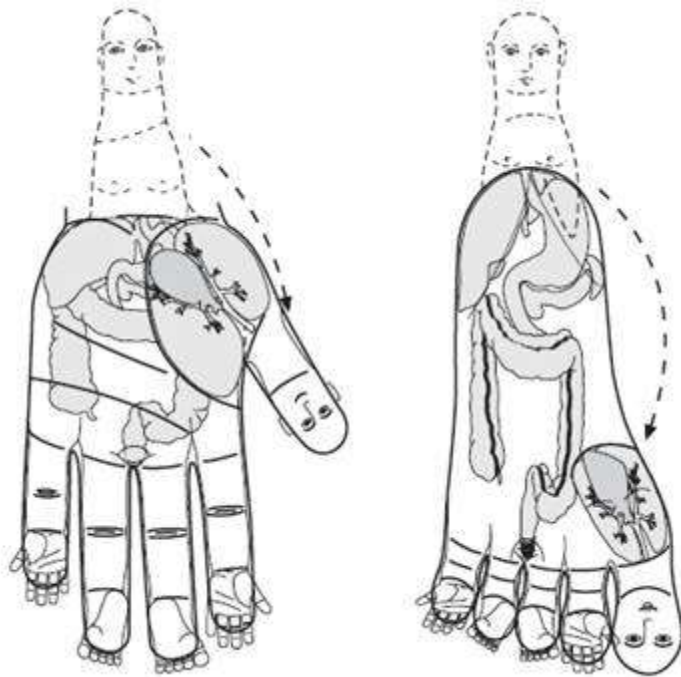
2. The size of the correspondence systems. Small correspondence systems are more efficient.

3. Localization of the mini-acupuncture system in relation to the center of the body. Distal and superficial matching systems are the most effective. It should be noted that the "antique" (shu) points of the meridians, corresponding to the Five Elements, are located distal to the elbow and knee joints.

4. The degree of functional activity of the part of the body on which the MAC is located. Compliance systems located on functionally active parts of the body are more effective.

The hands and feet have the most pronounced similarity to the body, have a high degree of functional activity, are small in size, and are located distally and superficially. It was the systems of the hand and foot, described by Park Jae Wu in full in 1987, that laid the foundation for the development of Su Jok therapy - a method of reflexology that combines a set of therapeutic and prophylactic methods of influencing the human body through its miniature projections on the hand (Su) and foot (Jock) [13]. The fundamental difference between the data

mini-acupuncture systems consist in the maximum structural similarity to the body of the hand (foot), when the points of correspondence to all organs and parts of the body on the hands and feet are arranged in a strict order, reflecting in a reduced form the anatomical structure and proportions of the human body (Fig. 8). The thumb corresponds to the head, the palm (sole) to the body, the third and fourth fingers (feet) correspond to the legs, and the second and fifth fingers (feet) to the hands [10]. All this allows you to master this technique in a short time, quickly and clearly find the zones of correspondence to various organs and parts of the body.



Rice. 8. Standard system of conformity to the body on the hand and foot.

Therefore, the mini-acupuncture systems of the hands and feet can be considered one of the most effective in the Homo system of the body. The clinical experience of the doctors of the Su Jok Academy (Moscow, Russia) in the application of the systems of conformity to the body on the hand and foot, proposed by Park Jae Wu, confirms the high efficiency of this area of reflexology.

#### LITERATURE

1. Vasilenko A.M., Osipova N.N., Shatkina T.V. Reflexology lectures: Tutorial. - M.: Su Jok Academy, 2002. -- 374 p.
2. Gerber R. Vibration Medicine Per. from English - M.: KOR, 1997. -- 320 p.
3. Zilov V.G., Pak Jae Wu, Petrakova T.A. et al. Onnuri Su Jok therapy: Application of Compliance Systems in Clinical Practice: Methodological Recommendations. - M., 2001. -- 24 p.

4. Zilov V.G., Sudakov K.V., Epshtein O.I. Elements of information biology and medicine - M.: MGUL, 2000.-- 248 p.
5. Kandarov F.B. The basics of micropuncture. Part I. - Ufa: Publishing house of BSMU, 2004.-- 393 p.
6. Kandarov F.B. The basics of micropuncture. Part II. - Ufa: Publishing house BSMU, 2004.-- 414 p.
7. Luvsan G. Traditional and modern aspects of eastern reflexology. - M.: Nauka, 1986.-574 s.
8. Karimov I.R., Kachan A.T. Nasolabial acupuncture. - SPb.: SPbMAPO, 2000.-- 35 p.
9. Oxenford R. Reflexology. - M.: Makhaon, 2000. - 64 p.
10. Park Jae Woo. The basics of Su Jok therapy. - M.: Su Jok Academy, 1999. - 161 s.
11. Park Jae Woo. Su Jok acupuncture. - M.: Su Jok Academy, 1996.-- 169 p.
12. Samosyuk I.Z., Lysenyuk V.P. Acupuncture: Medical Encyclopedia. - M.: AST-Press, 2004.-- 526 p.
13. Stoyanovskiy D.N. Reflexology: A Handbook. - Chisinau: Kartya Moldovenyaske, 1987.-- 380 p.
14. Ushakov A.V. Sternopuncture for spinal disco-radiculopathies. - M.: Knowledge-M, 2006. - 151 p.
15. Gleditsch JM Reflexzonen und Somatotopien. - Urbans Fisher. - Munchen-Jena, 2005.-- 246 p.
16. Yamamoto T., Maric-Oehler W. Yamamoto Neue Schadelakupunktur YNSA. - Chun-Jo Verlag, 1996 - 240 p.

---

Sokolova, T.E. Theory of correspondence systems, principles of its formation / T.E. Sokolova // Traditional medicine. - 2008. - No. 2 (13). - S.26-31.

[To favorites](#)