

Possibilities of the integrated use of traditional diagnostics for the selection of symptoms in homeopathy and drug testing of homeopathic remedies

HER. Metaksa, A.A. Fadeev, V.V. Vetchinov, Z.E. Subbotina, A.L. Tsibulsky
(Institute of Reflexology of the Federal Scientific Clinical and Experimental Center
traditional methods of diagnosis and treatment of Roszdrav, Moscow)

The fundamental difference between modern Western and traditional Eastern medicine is that Western science was looking, as a rule, for the material foundations of diseases, while Eastern science considered the body as an integral system in unity with the external environment. Central to oriental medicine is the concept of QI (energy) and WU-XIN (five primary elements) [1; eleven]. According to these concepts, energy (CI) circulates in the body, providing interconnections between the organs and systems of the body. The QI movement is carried out along the acupuncture channels, which, as shown by modern neurophysiology, are not the material substrate of the organism [5; 6; nine]. Pentagram WU-XIN reflects one of the basic principles of the organization of matter, in particular, the human body, and the harmony of nature.

According to WU-XING, there are 5 primary elements, each of which has a combination of certain internal organs, tissues and body fluids, mental functions and personal properties, which indicates that long before the emergence of Western psychosomatics, traditional Chinese medicine was inherent in the idea of the interconnection of the mental and somatic ...

Homeopathy has become in Western medicine that alternative to the orthodox approach, which suddenly brought it closer in its outlook to Eastern medicine [14]. Undoubtedly, homeopathy as a holistic and independent therapeutic method uses other tools for treatment, but the idea of the interdependence of the mental and physical, consideration of the patient's problems in their entirety and connection with the outside world (modality) very closely adjoin it with oriental medicine [2; 6].

In our opinion, a physician who possesses knowledge of traditional oriental medicine and homeopathy together receives additional opportunities for successful work, the purpose of which is to select a homeopathic remedy with maximum similarity.

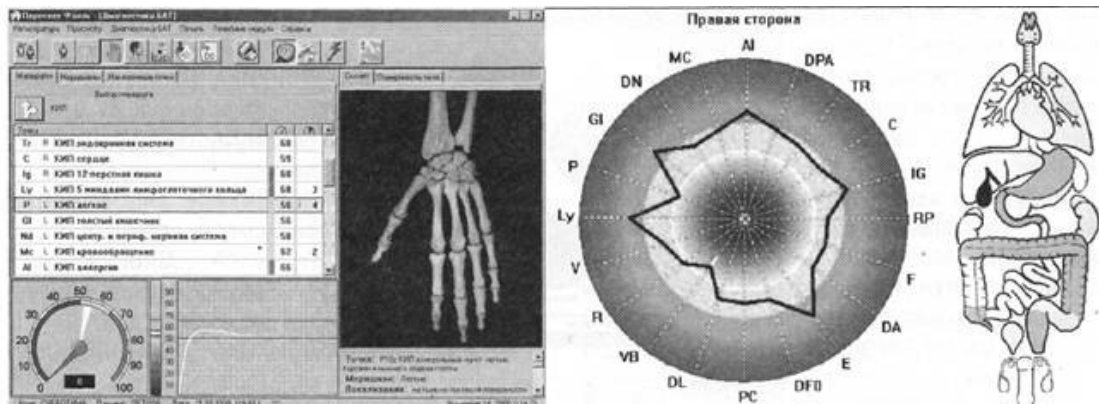


Rice. 1. External view of the "ARM-PERESVET" complex

The work of a homeopathic physician at the present stage is not complete without software, which makes it possible to speed up the selection and processing of symptoms. In the hardware-software complex of traditional diagnostics and therapy "ARM-PERESVET" there is currently an opportunity to combine the program of classical repertorization with traditional diagnostics by

system of acupuncture channels [4; 7:10; 12; 13]. In recent years, R. Voll's technique is considered the most popular [12; 13], which allows solving not only diagnostic tasks (obtaining a U-SIN diagram, assessing the state of organs and systems of the body), but also at the last stage of differential diagnostics to test a homeopathic drug by introducing it into the measurement circuit of the apparatus and assessing the effectiveness of its action before how the patient will take it in.

Many practicing homeopaths take advantage of this opportunity to dramatically improve the effectiveness of their treatment. In this article, we would like to demonstrate another possibility of using these two methods, namely, to show how, using the results of traditional diagnostics, it is possible to find the required symptom search algorithm.



Rice. 2. The program "Peresvet Voll" (measurements, various forms of presentation diagnostic results)

At the doctor's appointment, the patient presents many complaints. Wu-Xing theory helps to tie together many of them. Moreover, in the presence of some leading pathology, according to the same theory, it is simply necessary to conduct a survey covering a certain range of symptoms. Among them, a certain proportion belongs to psychoemotional symptoms and general symptoms, the other belongs to local symptoms. But collectively, at different levels, they will work to resolve the underlying problem that is most troubling to the patient.

For example, you are dealing with a patient suffering from chronic bronchitis or bronchial asthma. When working with local pathology, it is necessary to cover a much wider range of symptoms, necessarily including all levels of response of the whole organism and taking into account its individual characteristics.

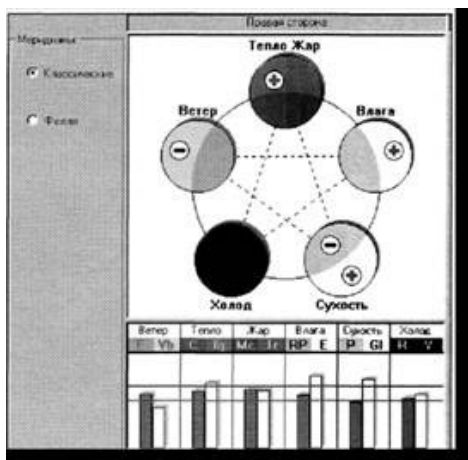
After conducting traditional diagnostics (this may be the method of R. Voll), the doctor receives an answer to the question of which organs, meridians, and primary elements are disturbed in this patient. For patients with bronchial asthma, the most altered is the primary element Dryness, which is associated with the functioning of two meridians and associated organs - the lungs and the large intestine.

Выборные симптомы	1	2	3	4	5	6	7
	Тяг	Раб	Кай-би	Нер	Ля	Лян	Тяг
головная боль / локализация / лоб, с иррадиацией в глаза, особенно нос, лоб	○ 5 (2)	○ 4 (2)	○ 4 (2)	○ 3 (1)	○ 4 (1)	○ 3 (0)	○ 3 (1)
нос / выделения при рините / густые	Тяг	Раб	Кай-би	Нер			Тяг
нос / выделения при рините / струйки, горки, комки	Тяг	Раб	Кай-би	Нер	Ля		Тяг
ухудшение / завтра / после	Тяг					Нане	
желудок / аппетит / продукты, вызывающие ухудшение / лук	Тяг				Ля		
нервы / нервозность / общие средства		Раб				Нане	Тяг
желудок / аппетит / нарушения, поперх		Раб	Кай-би		Ля	Нане	
нос / корочки носа / сыпь, раздражение, трещины, горки, изъязвление	Тяг		Кай-би		Ля		

Rice. 3. Program "Peresvet Homeopathy" (table of results of computer repertorization)

Even a certain external type of the patient will be constitutional manifestations of the energy of dryness [8].

These are, as a rule, people of tall stature, asthenic, stoop-shouldered, often narrow-shouldered, with a small head, a long and wide nose, narrow hands and long fingers. More often these patients are emaciated, unbearable, and their capacity for work is limited. They are slow, restrained, prone to pessimism. Meticulous, capable of hard work. They do well as experts, officials. In childhood, they were whiners, dissatisfied with life, somewhat lagging behind in school, timid, slow and dreamy. Thin and pale, with poor appetite. They often suffer from bronchitis, are prone to bronchial asthma, constipation. They are prone to sprains, subluxations. Early dental caries often occurs [9].



Rice. 4. "Peresvet Voll" program (U-XIN cycle for classical meridians and Voll meridians)

Let us consider other manifestations of dryness energy at various levels of its action and determine the necessary range of additional questions for our patient, as well as tentatively correlate possible symptoms with the headings of D. Kent's repertory.

CONSERVATISM OF THINKING

A person with a predominance of dryness energy is characterized by inertia of thinking, conservatism and rejection of new ideas. Thinking is inert, rigid, serves only one idea. Able to quickly make and save the chosen decision over time.

You should ask the patient about the following headings:

PSYCHE \ FEELINGS, sensations \ dull PSYCHE \ CRITICAL, condemn the tendency of PSYCHE \ Complaints

PSYCHE \ CONCENTRATION, ability to concentrate \ difficult, reduced PSYCHE \ INTEGRITY in small things

PSYCHE \ DISPOSAL, disdain, arrogance PSYCHE \

CONTRADICTIONS \ contradict; can't stand it when he is PSYCHE \ STABLE, self-willed

PSYCHE \ BREATHE, grumbles

PSYCHE \ DICTATOR, dominant, dogmatist, despot

PSYCHE \ DISSATISFACTION, dissatisfaction

PSYCHE \ self-doubt, self-esteem, self-esteem

PSYCHE \ FANATISM
PSYCHE \ FACIAL, picky PSYCHE \
FORGETTABLE, forgets PSYCHE \ STABLE,
stubborn
PSYCHE \ PESSIMIST
PSYCHE \ SUICIDE; desire to commit PSYCHE \
SUSPICIOUS

SADNESS

A person with a predominance of dryness energy often cries for an insignificant reason, he is constantly in a bad mood, which he tries to hide. The leading emotions of such a patient are sadness, longing, suffering. Sad eyes betray him. Often, such patients have a history of diseases that developed after great grief, for example, the death of relatives or loved ones.

PSYCHE \ SADNESS,
despondency PSYCHE \ Grief
PSYCHE \ UNConsolable
PSYCHE \ SIGHS
PSYCHE \ WEEPING CRYING, crying PSYCHE \
meditates; sad PSYCHE \ DISEASE from \ death of
a loved one
PSYCHE \ DISEASES from \ disappointment, disappointed hopes
PSYCHE \ DISEASES from \ grief
PSYCHE \ DISEASES from \ homesickness
PSYCHE \ longing, suffering
PSYCHE / DESPAIR
PSYCHE \ BOREDOM, inner emptiness PSYCHE \
INDIFFERENCE, indifference, apathy PSYCHE \ CRASHES,
groans, grieves, complains

SPICY TASTE

Taste generally falls into a different category - moisture. But it is precisely the pungent taste that refers to the energy of Dryness. If a person does not feel well after spicy food, this may be due to excess lung. An increased desire for spicy things is associated with a lack of dryness energy.

GENERAL \ FOOD AND DRINKS \ spicy, pungent taste; products with; desire for
GENERAL / FOOD & BEVERAGES / pepper / aggravated
GENERAL \ FOOD & DRINKS \ pepper \ desire \ black
GENERAL \ FOOD & DRINKS \ red pepper \ desire

FISH ODOR

Smells are generally heart controlled. But the main energy of dryness correlates with a fishy smell, or the smell of mud, dampness. Sensitivity to fishy odor corresponds to excess (you don't like the smell) or insufficiency of the lung (you like the smell of fish). In the repertory we can find the following headings:

GENERAL \ FUNNING, faintness, weakness \ smells; from \
fish nose \ smell \ sharpened to smell \ fish

SOUND, VOICE TONE

Sound is controlled by the lungs; if the sound of the voice has changed, treat the lungs. Voice formation occurs in the larynx, so the main heading will be the LARYNX / VOICE with further clarification of the nature of the change in voice.

Sighs and crying are considered a characteristic sign of the manifestation of dryness energy, which are closely related to the emotional manifestations of dryness energy. These headings should be found in the PSYCHE chapter.

PSYCHE \ SIGHS

PSYCHE \ crying, crying

NOSE

It is clear that patients with respiratory distress present a lot of nasal complaints. In classical Chinese medicine, the nose is the organ through which the energy of dryness opens outward. We also do not forget that the condition of the skin is closely related to the primary element Metal. The most indicative are the following rubrics, which are already a manifestation of the action of the energy of dryness in the nose.

Nose \ Nostril Bonding Nose \

Cracked

Nose \ CRACKING, crunching in the nose

Nose \ Cracked nostrils

NOSE / CORKS

NOSE / PEELING

NOSE \ COLOR; change \ bluish

nose \ DRY

NOSE \ MUCOSA NOSE \

SKIN

NOSE \ SHARP, pointed NOSE \

SCREW, squeak; sensation

NOSE / SCALES of desquamated epidermis in the nostrils

COUGH

Of course, cough is one of the leading complaints of patients with lung disease. An old, unproductive, dry cough is associated with the energy of dryness.

COUGH \ OBSTACLE

COUGH \ DRY

COUGH / DRY; due to COUGH / FOREIGN

body; sensation COUGH \ HARRY, hoarse

COUGH / ITCHING

COUGH \ SCRAPING

COUGH / SHARP, jerky COUGH /

SNORING; with

COUGH \ AUTUMN

COLON

The large intestine is the internal organ that forms the primary element Metal with the lungs and is Yang - a component of the energy of dryness.

Therefore, it is imperative to ask the patient about complaints related to the disorder of the large intestine. The attention of the doctor should be directed, first of all, to pain syndromes, and in this case you need to know that the pains of the energy of dryness are sharp, piercing, sharp, twitching, cutting, but more or less short-lived. The main modalities of such pains are worsening of symptoms in autumn, evening, at sunset. The feces also have certain features - dry, dense, color - from white to bluish-gray.

CHAIR \ "SHEEP" feces

CHAIR \ DRY

CHAIR \ BLUE GRAY

CHAIR \ Dense
CHAIR \ WHITE

LEATHER

An indispensable complaint of patients with lung pathology is the condition of the skin, which, like the lungs, is involved in the breathing process. The skin and nose are the organs of external manifestation of the energy of dryness. And even if at present there are no skin complaints, they certainly have occurred in the past, and, most likely, have been suppressed by local symptomatic treatment. Typical manifestations of the energy of dryness in the skin are the following headings:

LEATHER \ CRACK
SKIN \ SCAR, SCAR SKIN
\ BED
SKIN \ EXCELING
SKIN \ DRY
SKIN \ WRINKLES
SKIN \ FIRM, HARD SKIN \ NATURAL
SPOTS, NEVUS ROUGH SKIN \

SKIN \ WILT

THERMAL REGULATION

An important characteristic of the manifestation of dryness energy is a violation of thermoregulation. Therefore, the patient should be asked about increased sweating, about the nature of the course of inflammatory diseases.

SWEAT DEPARTMENT \ PROFUSE
SWIMMING DEPARTMENT \ PERIODIC
SWIMMING \ SKIN
CHEESE \ COUGH; with
OZNOB \ GOR; after OZNOB
\ Sweating

TIME MODALITIES

When viewed from the standpoint of the 5 primary elements of the daily rhythm, the time of the maximum manifestation of the energy of dryness is evening [3]. If this energy is excessive in the evening, the patient's condition as a whole worsens, and then you can use the GENERAL / EVENING rubric.

If the energy of dryness is insufficient, the rubric will be different, associated with an improvement in the condition in the evening - GENERAL \ EVENING \ better.

Modalities associated with local symptoms should not be confused. So, in chronic bronchitis, an improvement or worsening of the condition is associated with the daily activity of the lung meridian. The time of maximum activity is from 3 to 5 in the morning, and after 12 hours - the time of minimum activity.

When considering modalities associated with the season, autumn is considered the time of greatest stress. It is in the fall that an exacerbation of bronchopulmonary pathology occurs in patients with excess dryness.

GENERAL \ SEASONS \ fall worse

SHOULDER JOINT AND OTHER HAND JOINTS

According to R. Voll, there are secondary energy-informational connections between the primary element Metal and the listed joints. According to other sources, this is also any other pathology from the side of the upper extremities. The main characteristic manifestations of the energy of dryness are pain, the nature of which we have already spoken about: severe itching of the skin of the hands,

cracking in the joints, limiting their mobility, calluses, cracks in the skin of the hands, exhaustion of the limbs.

TEETH

According to the teachings of R. Voll about focal pathology, such a pathology of the teeth is associated with the energy of dryness as

TEETH \ CARIES, rotten, hollow

TEETH \ ENAMEL, defects

TEETH \ WALKING

In addition, there is a connection with the pathology of certain teeth - these are the 4th and 5th teeth of the upper jaw and the 6th, 7th - of the lower jaw.

Thus, combining such seemingly different methods as traditional diagnostics using acupuncture points and homeopathy, the doctor gets his hands on a powerful arsenal of tools aimed at solving the main task - to individualize treatment and select a homeopathic remedy, focusing on certain groups of symptoms in full compliance with the requirements of classical repertorization. The use of computer programs for repertorization and traditional diagnostics allows at the same time to significantly save the doctor's time and gives confidence in the correctness of the choice made, based on the results of drug testing.

LITERATURE

1. Vasilenko A. M. Acupuncture and reflexology: the evolution of methodology and theory. - Taganrog, 1998.
2. G. Keller. Homeopathy. - M., Medicine, 2000. - Part 1.2.
3. Kachan AT. Chinese biorhythmology Tzu - Wu - Liu - Zhu. - SPb., 1991.
4. Kukes V.G., Meizerov E.E., Koroleva M.V. and others. Prospects for the development of hardware software complex for diagnostics and therapy in traditional medicine // Materials of the scientific-practical conference "Traditional methods of treatment - the main directions and development prospects." - M., 1998. -- S. 18.
5. Kukushkin M.L. Somatovisceral interaction as the basis of Zhen-Ju therapy // Acupuncture. Scientific and practical achievements. - Smolensk: Homeopathic Medicine, 1997. - S. 93-99.
6. Lupichev N.L. Homeopathy and energy informatics. - M., 1994.
7. Meizerov E.E., Fadeev A.A., Natakhin M.V. and others. Prospects for the use of hardware program complex of a traditional medicine physician "ARM-PERESVEG" in prenosological diagnosis and treatment of various pathological conditions with algic syndrome // Coll. Materials of the Congress "Traditional Medicine 2000", Elista, 27-29.09.2000. - M., 2000. -- S. 581.
8. Park Jae By. Lectures on Su-Jok acupuncture. - M., 1991.
9. Park Jae Woo. Energy system of homointeraction of the human body. - M.: Su-Jok Academy, 1996.
10. Fadeev A.A., Meizerov E.E., Tsibulsky A.L., Vostokov A.V. Development trends software and hardware in traditional medicine. Sat. materials of the Congress "Traditional Medicine 2000", Elista, 27-29.09.2000. - M., 2000. -- S. 49.
11. Falev A.I. The classical methodology of traditional Chinese jen-ju therapy. - M.: Olympia, 1993.
12. Yanovskiy O.G. and others. Possibilities of computerized electropuncture diagnostics by the method of R. Voll in therapy with reflexotherapy and homeopathy: Methodical recommendations No. 98/232. - M.: Scientific Research Institute of Traditional Methods of Treatment of the Ministry of Health of the Russian Federation, 1999. - 28 p.
13. Yanovskiy O.G. Experience in researching the informativeness of electropunctural diagnostics // Acupuncture. Scientific and practical achievements. - Smolensk: Homeopathic Medicine, 1997. - S. 207-213.

fourteen. Hahnemann S. Organon der Heilkunst. 3. Aufl., Hippokrates, Stuttgart., 1982.

Possibilities of the integrated use of traditional diagnostics for the choice of symptoms in homeopathy and drug testing of homeopathic remedies / E.E. Metaksa, A.A. Fadeev, V.V. Vetchinov, Z.E. Subbotina, A.L. Tsibulsky // Traditional medicine. - 2005. - No. 1 (4). - P.4-8.

[To favorites](#)