

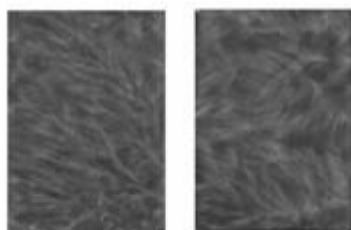
Cancer as a violation of information energy program of the biological system

Bravo^{one} O.S., Dorokhina^{one} M.V., Glebov² V.S., Avdeev³ I.V., Gorlova³ A.A. (^{one}LLC "BRAVO-MED", ²State Archives of the Russian Federation, ³Breeding station named after NN Timofeeva Agricultural Academy named after K. A. Timiryazeva, Moscow, Russia)

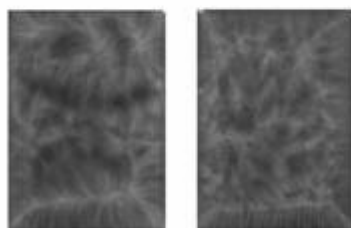
IN process development methodology for diagnostics fortunes biological system by depicting its information and energy structures, the study of information-energy images (IEE) of objects suffering from oncological pathology was carried out.

As a control group, two patients with uterine cancer in the stage of disintegration with the formation of a vaginal-rectal fistula and an animal (dog) with squamous cell carcinoma of the hind paw were selected. IEOs were obtained that had similar characteristics (see Fig.).

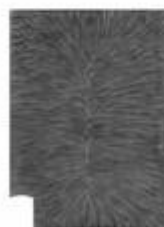
Dog. Squamous cell carcinoma.
oncology



I.E.O. biological system without

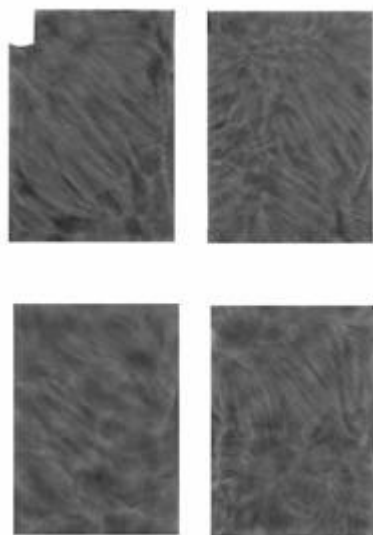


I.E.O. plants after transferring foreign
information to it



I.E.O. plants (wheat). Norm. 50
days after landing.

Man. Uterine cancer in decay stage



Withered wheat plant

Rice. Information-energetic oncological images biological systems with diseases

When analyzing information images in a large array, we found IEI images similar in structure and nature, reflecting the phase of plant death.

In the reports presented at previous conferences, materials of experiments were given in which information from a plant of another species was transferred to plants of one species. And in these cases, similar structures were revealed.

The data obtained give reason to do the following conclusions:

1. IEI of animals and humans affected by cancer, very similar in structure and character of the image.
2. IEO of biological system with oncological disease have a very high degree of similarity with the IEO of plants at the stage of their death. (Homo is dominated by Cold by Park Jae Woo).
3. There is a fairly high degree of correlation of IEI patients oncological diseases with IEO of plants, to which the information and energy structure of a plant of another species was previously transferred.
4. WITHpositions information and energy views
Oncological diseases can be considered as the implementation of a program by the body that is alien to it.

Bravo O.S., Dorokhina M.V., Glebov V.S., Avdeev I.V., Gorlova A.A. Cancer as a violation of the information and energy program of the biological system // XI

:" IMEDIS ", 2005, vol. 2 - C.206-209